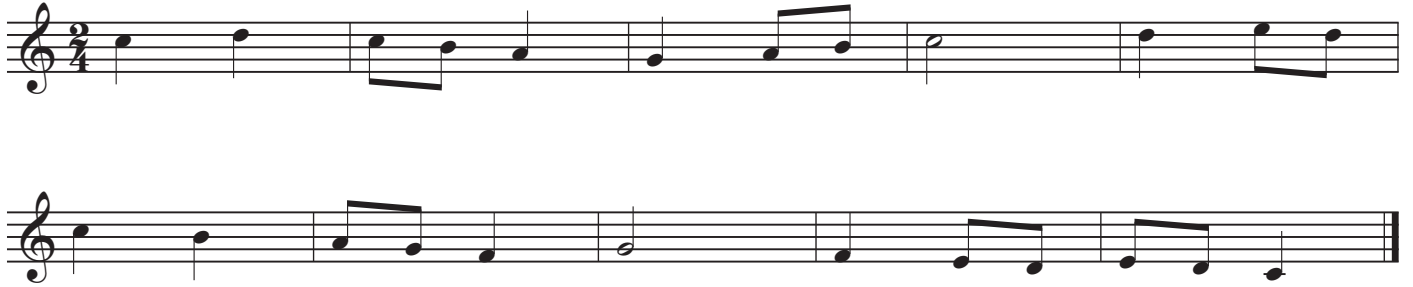


ΓΑΛΛΙΚΑ ΝΤΙΚΤΕ

Επιμέλεια: Μ. Τσαμαλίκος

CD 1A

1



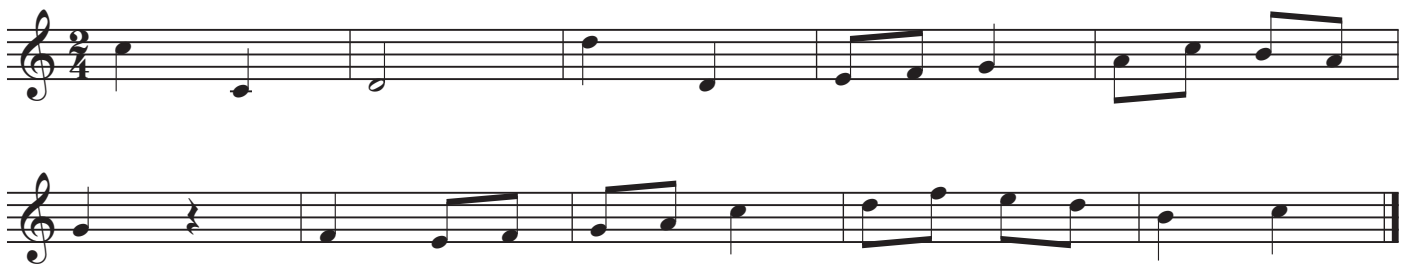
2



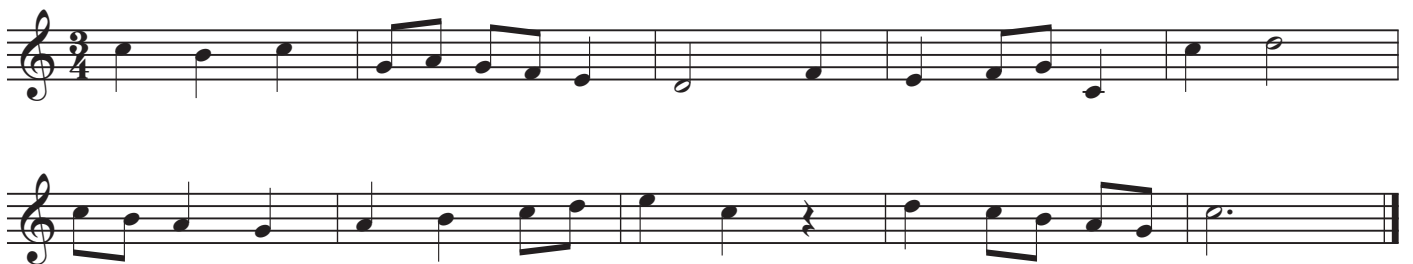
3



4



5



6





7



8



9



10



11



12



13

Musical notation for exercise 13, first staff. Treble clef, 3/4 time signature. The melody starts with a quarter rest, followed by eighth notes G4, A4, B4, C5, B4, A4, G4. A triplet of eighth notes (G4, A4, B4) is marked with a '3' above it. The piece ends with a quarter rest.

14

Musical notation for exercise 14, first and second staves. Treble clef, 3/4 time signature. The first staff contains the first two measures: quarter note G4, quarter note A4, quarter note B4. The second staff continues with quarter notes C5, B4, A4, G4, quarter note F4, quarter note E4, quarter note D4, quarter note C4. The piece ends with a quarter rest.

15

Musical notation for exercise 15, first and second staves. Treble clef, 3/4 time signature. The first staff contains the first two measures: quarter notes G4, A4, B4, quarter note C5. The second staff continues with quarter notes B4, A4, G4, quarter note F4, quarter note E4, quarter note D4, quarter note C4. The piece ends with a quarter rest.

16

Musical notation for exercise 16, first and second staves. Treble clef, 3/4 time signature. The first staff contains the first two measures: quarter note G4, quarter note A4, quarter note B4, quarter note C5. The second staff continues with quarter notes B4, A4, G4, quarter note F4, quarter note E4, quarter note D4, quarter note C4. The piece ends with a quarter rest.

17

Musical notation for exercise 17, first and second staves. Treble clef, 3/4 time signature. The first staff contains the first two measures: quarter note G4, quarter note A4, quarter note B4, quarter note C5. The second staff continues with quarter notes B4, A4, G4, quarter note F4, quarter note E4, quarter note D4, quarter note C4. The piece ends with a quarter rest.

18

Musical notation for exercise 18, first and second staves. Treble clef, 3/4 time signature. The first staff contains the first two measures: quarter note G4, quarter note A4, quarter note B4, quarter note C5. The second staff continues with quarter notes B4, A4, G4, quarter note F4, quarter note E4, quarter note D4, quarter note C4. The piece ends with a quarter rest.

19

Musical notation for exercise 19, first and second staves. Treble clef, 3/4 time signature. The first staff contains the first two measures: quarter note G4, quarter note A4, quarter note B4, quarter note C5. The second staff continues with quarter notes B4, A4, G4, quarter note F4, quarter note E4, quarter note D4, quarter note C4. The piece ends with a quarter rest.

CD 1B

1

Exercise 1 consists of two staves of music in 3/4 time. The first staff contains a sequence of eighth and sixteenth notes. The second staff continues the melody, ending with a triplet of eighth notes.

2

Exercise 2 consists of two staves of music in 3/4 time. The first staff features a mix of eighth and sixteenth notes. The second staff continues the piece, including a triplet of eighth notes.

3

Exercise 3 consists of two staves of music in 3/4 time. The first staff includes a triplet of eighth notes. The second staff continues the melody with various note values and rests.

4

Exercise 4 consists of two staves of music in 3/4 time. The first staff features a triplet of eighth notes. The second staff continues the piece with a variety of rhythmic patterns.

5

Exercise 5 consists of two staves of music in 3/4 time. The first staff includes a triplet of eighth notes. The second staff continues the melody with eighth and sixteenth notes.

6

Exercise 6 consists of two staves of music in 3/4 time. The first staff includes a triplet of eighth notes. The second staff continues the piece with a variety of rhythmic patterns.

7

8

9

10

11

12

